

Land Management Tools

for your every need



- Wheeled Root Rakes
- Regrowth Plows
- Regrowth Rakes
- Top Loading Ripper

- Blade Rakes
- Subsoilers
- Stinger Plows
- Cab Screens
- Top Loading Ripper Loops

- Regrowth Rippers
- Virgin Root Rakes
- Virgin Root Plows
- Ripper Loops
- Top Loading Rakes

HOLT.

CAT

*For More Information
Call Roy Klug at:
210/648-8415
1-800-275-4658*

Custom Engineered Products

Land Clearing Equipment

HOLT CAT

Manufacturing & Fabrication . . .

A Tradition of Experience

CUSTOM ENGINEERED PRODUCTS

The Custom Engineered Products (C.E.P.) Division of HOLT CAT is an organization dedicated to providing you with high quality, dependable manufactured and custom fabricated products. As a division of one of the oldest Caterpillar® dealers in the United States, we are very experienced in the packaging, customization and modification of Cat® products, as well as the manufacture of engine peripherals and heavy equipment attachments.

Tradition

The C.E.P. Division is built upon a legacy of heavy equipment manufacturing experience which traces its roots back to the late 1800's. In 1883, Benjamin K. Holt and two of his brothers founded the Stockton Wheel Company, a manufacturer of wagon wheels and carriage bodies. The manufacturing experience and ingenuity of this young entrepreneur gave the world its first practical crawler tractor in 1904 and made Holt Manufacturing the foundation of today's Caterpillar, Inc.

HOLT CAT has close ties to this rich tradition. The principle owners of HOLT CAT are direct descendants of Benjamin Holt. The same spark of innovation which inspired Benjamin Holt has been alive and well at HOLT CAT since we first began our own manufacturing operation in the late 1940's.

Capability

Not only does the C.E.P. Division have the experience to get the job done, but we also have the tooling. The C.E.P. Division has 18,750 sq.ft. of enclosed shop area. This facility is equipped with seven and one half ton overhead hoists and a host of manufacturing equipment from milling machines to T.I.G. welding machines. Tooling, however is only as good as its operators. The C.E.P. Division employs a full-time staff of welders (all certified) and machinists, who we believe are among the best in the industry. A current list of tooling is available upon request.

Products

The product line of the C.E.P. Division is virtually limited only by your imagination. Apart from the custom applications you may want to investigate, we have a standard line of high quality products.

Machine Attachments

The design and fabrication of machine attachments is what first established HOLT CAT in the manufacturing business almost 50 years ago. Our experience as a Cat equipment dealer gives us the edge in this field. We have designed and fabricated root plows, root rakes, blade rakes, stackers, grubbers, buckets, push blocks, seeder boxes and more for a wide variety of heavy equipment. We can fabricate the standardized product line we have developed, or we can design and build to your specifications for custom applications.

Water Tankers

HOLT Spray King® Water Tankers are a major product line of the C.E.P. Division. We have engineered standardized packages to convert a variety of Cat trucks and scrapers to water tankers of variable sizes. We can convert new or used equipment from any manufacturer and offer a wide selection of spray systems and driver controls.

Superior Products

The elements that comprise the C.E.P. Division add up to value. Our years of experience, extensive tooling and superior personnel enable us to provide you with a high quality product at a reasonable price. We invite you to take a closer look at the Custom Engineered Products Division to see how we can meet your manufacturing and fabrication needs.

MANUFACTURED MACHINE ATTACHMENTS

HOLT CAT

HOLT CAT began its manufacturing operations in the late 1940's specifically to fabricate special application attachments for their Caterpillar earthmoving equipment line. Many of these early products were designed for landclearing applications. In fact, Holt manufactured equipment was used to control brush as well as prepare land for cultivation in a large portion of ranch land in South Texas. Our products are used in Africa, South America and Asia.

HOLT CAT has developed several lines of standardized attachments for Cat earthmoving equipment. While the following is brief overview of HOLT CAT's major machine attachments, it should by no means be considered a complete list. Customized equipment for specialized applications can be quoted on request

Landclearing Attachments

- | | |
|----------------|-------------------------------------|
| 1. SERIES RP | ROOT PLOW, COMPLETE |
| 2. SERIES RGP | RE-GROWTH PLOW® |
| 3. SERIES RGR | RE-GROWTH ROOT RAKE |
| 4. SERIES TLR | TOP LOADING RIPPER/TOP LOADING RAKE |
| 5. SERIES RPB | ROOT PLOW, BASIC |
| 6. SERIES PL | PLOW LOOP (Current Thinstyle Model) |
| 7. SERIES RA | REAR ARCH |
| 8. SERIES R | MULTI-APPLICATION RAKE |
| 9. SERIES RR | WHEEL TYPE ROOT RAKE |
| 10. SERIES BRA | BLADE RAKE ATTACHMENT |
| 11. SERIES BS | BRUSH STACKER |
| 12. SERIES ST | STINGER (Spot Grubber) |

PLOW BLADE REPLACEMENTS

HOLT Root Plow

HOLT CAT fabricates high quality replacement cutting edges for all sizes and types of plows, choppers and grubbers.

Weld on Strips

HOLT CAT provides a low cost weld-on-strip to extend the service life of worn root plow cutting edges.

High Wrap Resistant Steel Plate

HOLT CAT C.E.P. Division has an extensive stock of high quality wrap plate that ranges from low to extreme duty use. We have in house cutting capability with auto CAD computer graphics which allows contour cutting for all sizes of plate.

Special Edges

HOLT CAT can custom fabricate blades to your specifications for a variety of applications.

ROOT PLOW



The Root Plow mounts behind a track-type tractor and is designed to plow land that has been chained and stacked or has only light to medium brush. The Root plow shears brush below the bud zone to prevent re-growth and aids in loosening soil for better water absorption.

SERIES RP: ROOT PLOW (COMPLETE)

CATALOG NUMBER	APPLICABLE HP RANGE	WIDTH OF CUT		ESTIMATED WEIGHT	
		FEET	METERS	LBS.	KG.
Series RP-7.5	140-170hp	8'8"	2.64	7,900	3,583
Series RP-9	160-200 hp	10'2"	3.10	9,100	4,128
Series RP-11	235-270 hp	12'2"	3.71	10,775	4,887
Series RP-12	270-300 hp	13'2"	4.01	10,900	4,944
Series RP-14	286-335 hp	15'2"	4.62	13,000	5,897
Series RP-15	385-410 hp	16'2"	4.93	14,000	6,350

Standard Equipment

- Root Plow
- Overhead frame
- Moldboard
- Double trunnion & trunnion bearings
- Hydraulic models RP-6 thru RP-7.5 include:
 - single cylinder hydraulically actuated cable lift
 - optional canopy is recommended for operator protection
- Hydraulic models RP-9 thru RP-15 include:
 - dual cylinder hydraulically actuated cable lift
- Hydraulic hose group included on hydraulic models
- D8K & D7 - Hydraulic valve guard

Optional Equipment

- Canopy top - for use with lift frame
 - Width matches tractor fenders, add 57lbs/26.1 kg
- Spreader box flanges for rapid assembly and disassembly
 - Add 280lbs/127kg
- Export package

NOTE:
Specify tractor model, attachments and serial numbers when ordering. ROPS cab information is required.

Materials and specifications subject to change without notice.

RE-GROWTH PLOW®



The Re-Growth Plows® are designed to be used in areas that have already been cleared with conventional root plowing techniques, where re-growth has occurred, or where virgin brush is less than 6" in diameter. They utilize 12" plowing depths for maximum kill and are used on smaller tractors with quick disconnects for ease of operation.

SERIES RGP: RE-GROWTH PLOW®

CATALOG NUMBER	APPLICABLE HP RANGE	WIDTH OF CUT		ESTIMATED WEIGHT	
		FEET	METERS	LBS.	KG.
Series RGP	140-170 hp	10	3.04	4,800	2,176

Standard Equipment

- Additional Cutting Edges available from HOLT CAT
- Includes Quick Disconnect Mounting and Cylinder

NOTE:
Specify tractor model, attachments and serial numbers when ordering.

RE-GROWTH ROOT RAKE



The Re-growth root rake is designed for use on land that has been root plowed. Its main application is to collect and windrow brush and roots which have been loosened by root plowing. The re-growth root rake features include: maximum depth control for bringing severed roots to the surface, quick highlift capability easing removal of collected brush, and a quick disconnect feature for fast and simple implement changes.

SERIES RGR: RE-GROWTH ROOT RAKE

CATALOG NUMBER	APPLICABLE HP RANGE	WIDTH OF CUT		ESTIMATED WEIGHT	
		FEET	METERS	LBS.	KG.
Series RGR	140-170 hp	14	4.27	2,350	1,065

Standard Equipment

- The Quick Disconnect Holt Hitch will accept plow or rake
Does not come standard with a rake
- Tips for rake are standard Caterpillar® 416 bucket tips

NOTE:
Specify tractor model, attachments and serial numbers when ordering.

TOPLOADING RIPPER LOOP



The Top Loading Ripper Loop was special designed for Caterpillar D-5 & D-6 equipment with optional ripper attachment. A simple operation will convert a shank attachment to a ripper loop in minutes. This economical tool quickly converts similar machines to multi-use applications.

SERIES TLR: TOP LOADING RIPPER LOOP

CATALOG NUMBER	APPLICABLE HP RANGE	WIDTH OF CUT FEET	WIDTH OF CUT METERS	ESTIMATED WEIGHT LBS.	ESTIMATED WEIGHT KG.
Series TLR D5G	90hp	7'0"	2.13	1000	2,540
D5M	110 hp	7'0"	2.13	1000	2,540
D6M	140 hp	8'0"	2.43	1200	3,048
D6M	140 hp	8'0"	2.43	1200	3,048
D6N	145 hp	8'0"	2.43	1200	3,048

Standard Equipment

- Double Edge Blades
- Fins
- Bolt on Edge
- Hard Face Standards
- Fits Standard Ripper Attachment
- High Strength Steel

NOTE:
Specify tractor model, attachments and serial numbers when ordering.

Materials and specifications subject to change without notice.

TOP LOADING RAKE



The Top Loading Rake attachment was developed to be used with the Caterpillar D-5 equipment with optional ripper attachment. A simple operation will convert a shank attachment to a rake in minutes. This economical tool quickly converts similar machines to multi-use applications.

SERIES TLR: TOP LOADING RAKE

CATALOG NUMBER	APPLICABLE HP RANGE	WIDTH OF CUT FEET	WIDTH OF CUT METERS	ESTIMATED WEIGHT LBS.	ESTIMATED WEIGHT KG.
Series TLR D5N	90hp	10'0"	3.048	750	1,905
D5M	110 hp				

Standard Equipment

- Fits Standard Ripper Attachment
- Teeth 1 1/2' thick
- Hard Face Surface on Teeth
- High Strength Steel
- Optional Wings Available

NOTE:
Specify tractor model, attachments and serial numbers when ordering.

Materials and specifications subject to change without notice.

ROOT PLOW - BASIC



The Basic Root Plow has a V-type moldboard with a low silhouette which easily slices through brush and tree roots. Moldboard fins move roots to the surface for maximum “kill” by air and sun. Throat clearance from moldboard to crossbeam allows brush and debris to flow through plow easily.

SERIES RPB: ROOT PLOW - BASIC

CATALOG NUMBER	APPLICABLE HP RANGE	WIDTH OF CUT FEET	METERS	ESTIMATED WEIGHT LBS.	KG.
Series RPB 7.5	140-170hp	8'8"	2.64	7,200	3,266
Series RPB 9	180-200 hp	10'2"	3.10	8,400	3,810
Series RPB 11	235-270 hp	12'2"	3.71	9,875	4,479
Series RPB 12	270-300 hp	13'2"	4.01	9,950	4,513
Series RPB 14	286-355 hp	15'2"	4.62	12,076	5,478
Series RPB 15	385-410 hp	16'2"	4.93	13,025	5,908

Standard Equipment

- Root Plow Frame
- Moldboard
- Cutting Edges
- Specify Cable or Hydraulic

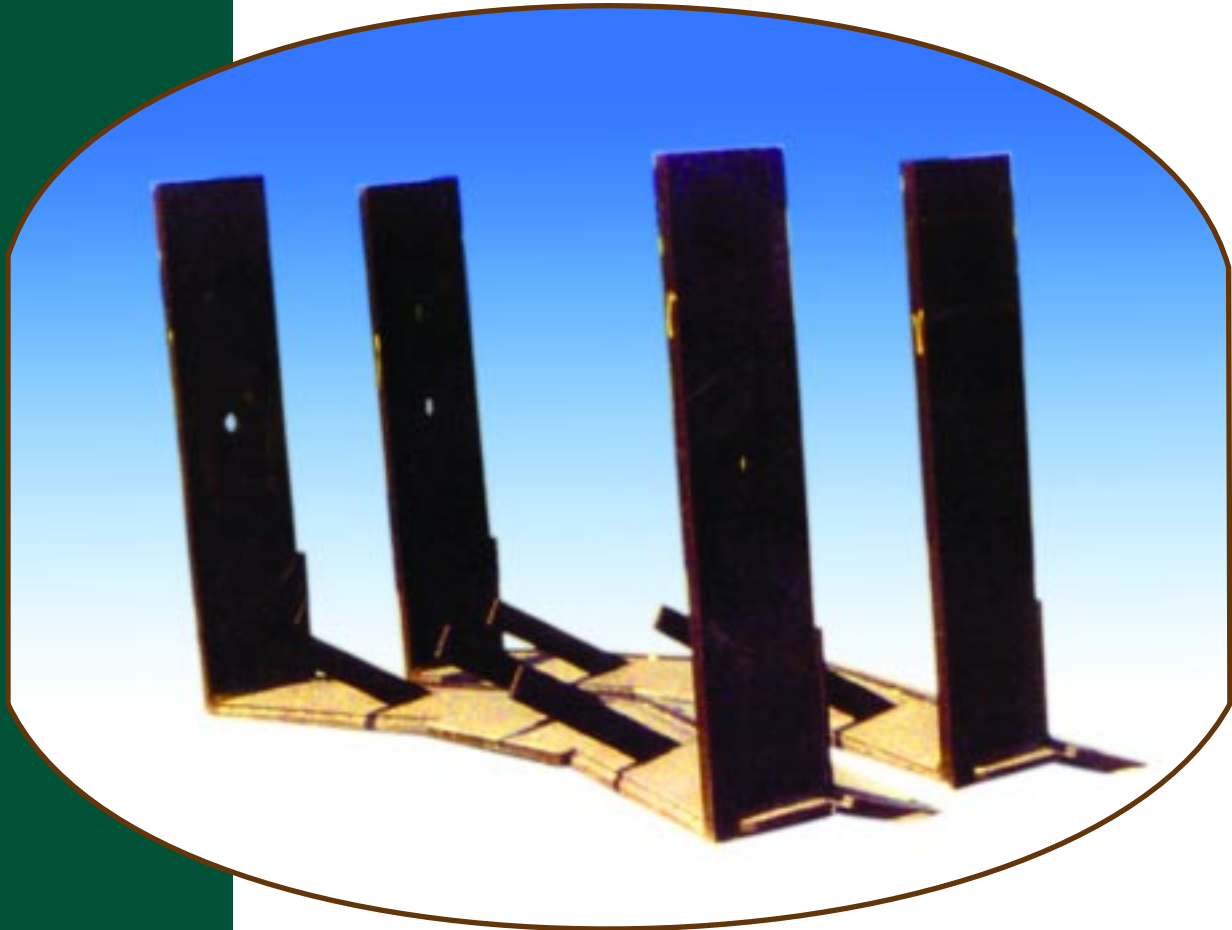
NOTE:
Specify tractor model, attachments and serial numbers when ordering.

Optional Equipment

- Spreader box flanges for rapid assembly and disassembly
-Add 280lbs/127kg
- Export package

Materials and specifications subject to change without notice.

PLOW LOOP



The Plow Loop is the same design as Series RP without draft arms and cross members and is designed to replace a worn or damaged loop.

SERIES PL: PLOW LOOP

(Current Thinstyle Model Only)

CATALOG NUMBER	APPLICABLE HP RANGE	WIDTH OF CUT FEET METERS	ESTIMATED WEIGHT LBS. KG.
Series PL-7D	140 hp	7'6" 2.29	1,500 680
Series PL-7EG	160-200 hp	9'0" 2.74	2,100 953
Series PL-8	148-191 hp	9'0" 2.74	2,100 953
Series PL-8H	235-269 hp	11'0" 3.35	2,900 1,315
Series PL-8K	270-300 hp	12'0" 3.67	3,200 1,452
Series PL-9	285-335 hp	14'0" 4.27	3,900 1,769
Series PL-9GH	335-410 hp	15'0" 4.57	4,200 1,905

* Width is centerline dimension between standards

Standard Equipment

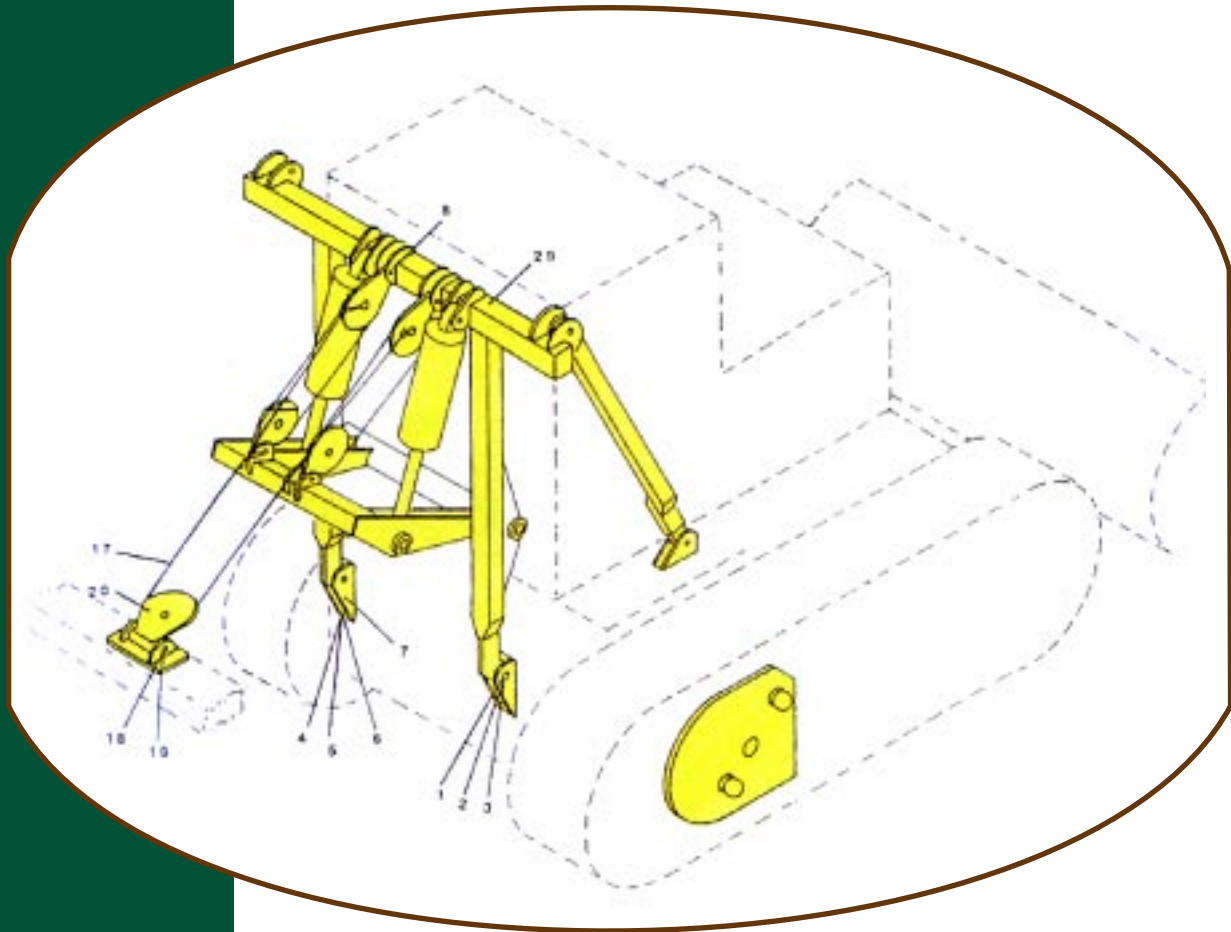
- Moldboard
- Standards
- Fins
- Blades

Optional Equipment

- 6' Loops for PL-D6B & PL-D5 are solid moldboard type
- Export package

NOTE:
Specify tractor model, attachments and serial numbers when ordering.

REAR ARCH



The Rear Arch is a hydraulically operated attachment of a Root Plow utilizing maximum carrying height and controlled depth penetration.

SERIES RA: REAR ARCH (Only)

CATALOG NUMBER	MODELS	ESTIMATED WEIGHT	
		LBS.	KG.
Series RA-7	D7D	708	321
Series RA-7EG	D7E,F,G	734	333
Series RA-8	D8	746	338
Series RA-8HK	D8H,K	825	374
Series RA-9	D9	840	381
Series RA-9GH	D9G,H	845	383

Standard Equipment

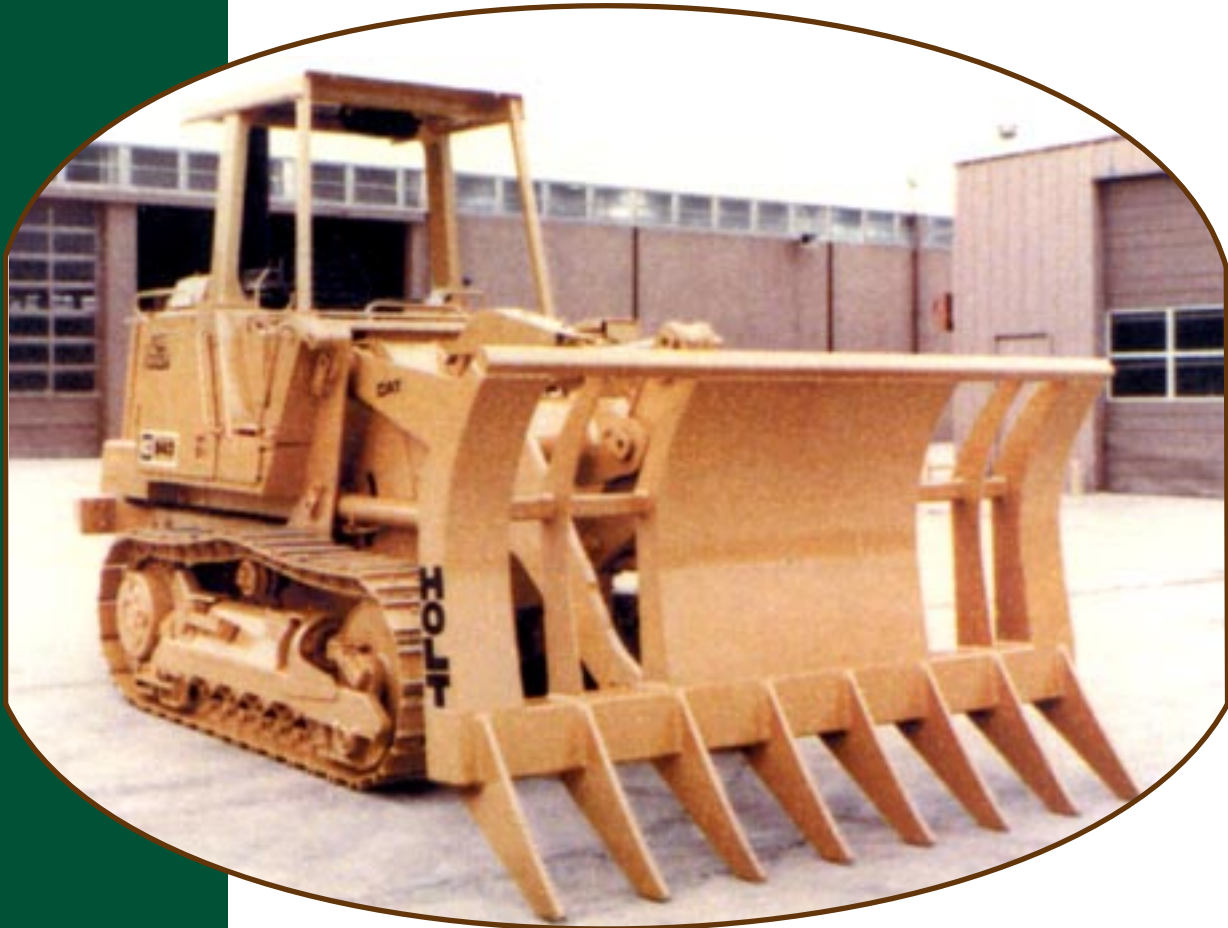
- Brackets
- Sheave Group
- D8K - Hydraulically Valve Guard
- Hydraulic Hoses

Optional Equipment

- Export package

NOTE:
Specify tractor model, attachments and serial numbers when ordering. ROPS cab information is required.

MULTI-APPLICATION RAKE



The Multi-Application Rake is an extra heavy duty attachment for tough land clearing conditions including tree stump and rock removal. The features include curved tooth and moldboard design which lifts and rolls brush for maximum carrying capacity, welded steel unit construction provides maximum strength with minimum weight, center moldboard gives ample protection to the radiator and proper tooth spacing sifts soil from brush. The rake is also interchangeable with standard bulldozer blades and is available for wheel and track-type loaders.

SERIES R: MULTI-APPLICATION RAKE

CATALOG NUMBER	APPLICABLE HP RANGE	RAKE WIDTH		# OF TEETH	TOOTH CENTER WIDTH				EST. WEIGHT	
		FT	MTRS		IN.	CM.	LBS.	KG.	LBS.	KG.
SeriesR4A	65-80 hp	9'6"	2.90	8	15.50	39.2	2.0	5.0	1,635	741
Series R4S	65-80 hp	9'6"	2.90	8	15.50	39.2	2.0	5.0	1,675	760
Series R5A	93-105 hp	11'4"	3.45	9	16.25	41.3	2.5	6.3	2,150	975
Series R5S	93-105 hp	11'4"	3.45	9	16.25	41.3	2.5	6.3	2,300	1,043
Series R6CA	120-140 hp	11'4"	3.45	9	16.25	41.3	2.5	6.3	2,900	1,315
Series R6CS	120-140 hp	11'4"	3.45	9	16.25	41.3	2.5	6.3	3,100	1,406
Series R7DA	140 hp	11'4"	3.45	9	16.25	41.3	2.5	6.3	3,000	1,360
Series R7DS	140 hp	11'4"	3.45	9	16.25	41.3	2.5	6.3	3,050	1,383
Series R7FA	160-180 hp	12'0"	3.66	9	17.00	43.2	3.0	7.6	4,300	1,950
Series R7FS	160-180 hp	12'0"	3.66	9	17.00	43.2	3.0	7.6	4,500	2,041
Series R8EA	191 hp	12'0"	3.66	9	17.00	43.2	3.0	7.6	4,500	2,041
Series R8ES	191 hp	12'0"	3.66	9	17.00	43.2	3.0	7.6	4,700	2,132
Series R8HA	235-270 hp	12'8"	3.86	9	18.00	45.7	3.5	8.9	5,400	2,449
Series R8HS	235-270 hp	12'8"	3.86	9	18.00	45.7	3.5	8.9	5,700	2,585
Series R9GA	385 hp	13'8"	4.16	9	19.00	48.3	4.0	10.0	8,400	3,809
Series R9GS	385 hp	13'8"	4.16	9	19.00	48.3	4.0	10.0	8,550	3,878

Standard Equipment

- Brush Rack
- Radiator Protector Plate
- Holt Hardware for Push-arms or C-frame Groups

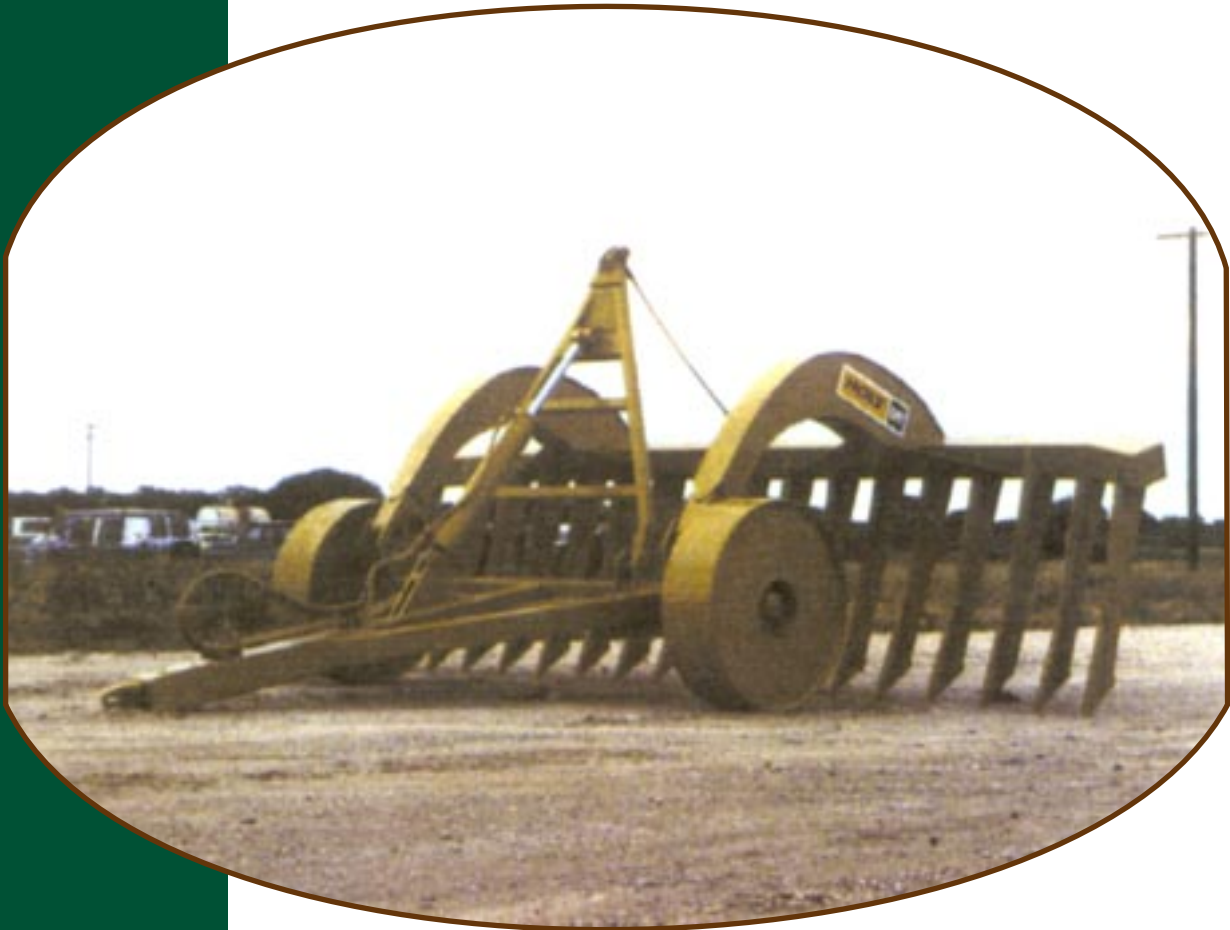
Optional Equipment

- Holt heavy duty push arms and brace group in lieu of Caterpillar® hardware available
- Number of teeth may be increased or reduced:
Add or deduct 150lbs/68kg each

NOTE:
Specify tractor model, attachments and serial numbers when ordering.

Materials and specifications subject to change without notice.

ROOT RAKE



The Root Rake is a tool for removing severed roots, especially after root plowing, and is usually used to prepare land for disk harrowing or cultivation. Its features include: wide raking width giving maximum production, steel wheels provide a leveling effect to maintain even raking depth, and a high arch between wheel assembly and rake gives added brush capacity.

SERIES RR: WHEEL TYPE ROOT RAKE

CATALOG NUMBER	APPLICABLE HP RANGE	WIDTH OF RAKE		# OF TEETH	ESTIMATED WEIGHT	
		FEET	METERS		LBS.	KG.
Series RR-18 Heavy Duty 18' overall rake width	120-140 hp	18	5.49	15	9,500	4,308
Series RR-21 Heavy Duty 21' overall rake width	160-185 hp	21	6.41	17	10,700	4,853
Series RR-24 Heavy Duty 24' overall rake width	300-385 hp	24	7.32	19	11,200	5,080

Standard Equipment

- Cable Sheave Group for Operation (Require Cable Control Unit)
- Hydraulic Cylinder and Hose Group (Requires Ripper Valve)
- Tooth Centers; 15 inches
- Wheel Width; 15 inches

NOTE:
Specify tractor model, attachments and serial numbers when ordering.

Optional Equipment

- RR-24 Special Cleanup Teeth; 14 Regular Teeth @ 22" centers, 13 Cleanup Teeth between straight beam
- 24 inch wide wheels
- Bolt-on draft arms for volume reduction in shipping
- Export Package

Materials and specifications subject to change without notice.

BLADE RAKE ATTACHMENT



The Blade Rake is an attachment for light to medium brush stacking operations. It features ears welded on the back of a bulldozer blade allowing for easy attachment and removal of the rake. The wide tooth spacing on the rake sifts soil from the brush, making burning easier.

SERIES BRA: BLADE RAKE ATTACHMENT

CATALOG NUMBER	APPLICABLE CAT® RANGE	WIDTH OF RAKE FT	WIDTH OF RAKE MTRS	# OF TEETH	MAX TOOTH PENETRATION	TOOTH THICKNESS
Series BRA 3S	D3	7'11"	2.41	8	22"	2.0"
Series BRA 4EA	D4	10'3"	3.12	9	22"	2.0"
Series BRA 4ES	D4	8'0"	2.44	8	22"	2.0"
Series BRA 5A	D5	11'11"	3.63	11	22"	2.5"
Series BRA 5S	D5	10'4"	3.15	9	22"	2.5"
Series BRA 6A	D6	12'5"	3.78	11	22"	2.5"
Series BRA 6S	D6	10'6"	3.20	9	22"	2.5"
Series BRA 7A	D7	14'0"	4.27	11	22"	3.0"
Series BRA 7S	D7	12'0"	3.66	11	22"	3.0"
Series BRA 8A	D8	15'2"	4.62	13	22"	3.0"
Series BRA 8S	D8	12'9"	3.88	11	22"	3.0"

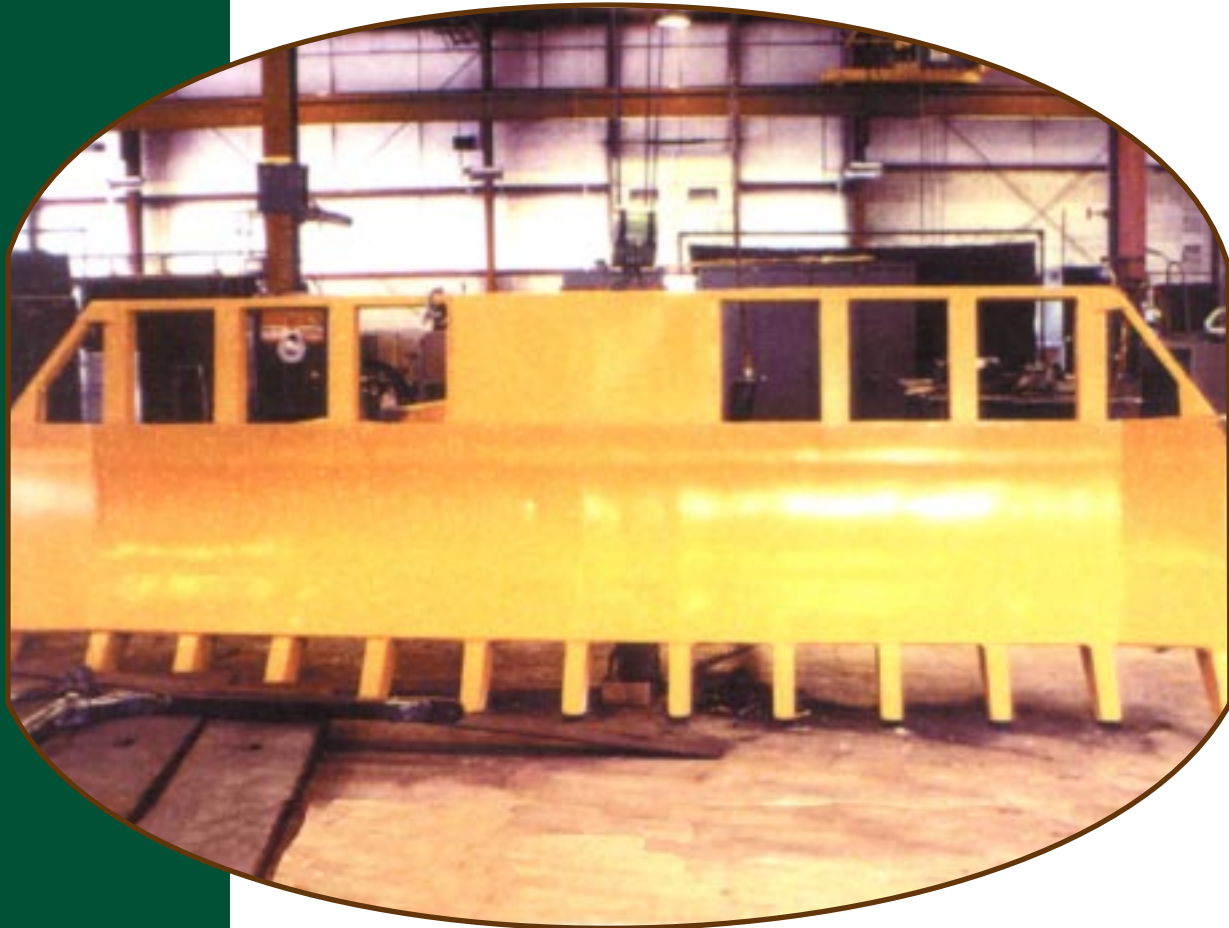
Standard Equipment

- Main Beam BRA D3S-D6DS 6" square tubing with 1/2" wall
BRA D7DA-D7GS Boxed 8" Wide Flange
BRA D8HA-D8KS Boxed 10" Wide Flange
- Maximum Tooth Length for Blade Rake-15"

NOTE:
Specify tractor model, attachments and serial numbers when ordering.

Materials and specifications subject to change without notice.

BRUSH STACKER



The Brush Stacker is designed to be mounted to dozer push arms or C-frame for fast, clean stacking of timber and brush and prepares relatively dirt free stacks for burning or decaying. Heavy duty steel fabrication, solid steel teeth with hard facing and brush rack for added capacity are some of its features.

SERIES BS: BRUSH STACKER

CATALOG NUMBER	APPLICABLE HP RANGE	WIDTH OF RAKE		# OF TEETH	ESTIMATED WEIGHT LBS.	ESTIMATED WEIGHT KG.
		FEET	METERS			
Series BS-14 14" overall rake width	120-140 hp	14	4.27	11	3,000	1,361
Series BS-16 16' overall rake width	140-180 hp	16	4.88	13	3,500	1,587
Series BS-19 19' overall rake width	180-385 hp	19	5.79	15	4,500-5,000	2,041-2,268

Standard Equipment

- Brush Rack
- Radiator Protector Plate
- Hardware for Cat push arm or "C" frame group, use Cat braces and pins
- Opening between teeth - 13 inches
 - Width of tooth - 3 inches
 - Length of tooth - 14 inches

Optional Equipment

- Additional Teeth (Add 75lbs/34.09kg per tooth)

NOTE:
Specify tractor model, attachments and serial numbers when ordering.

STINGER



The Stinger can be mounted to a bulldozer blade, C-frame or loader arms and is designed for selective grubbing of small to medium sized brush in areas where root plowing is impractical, individual plants are widely dispersed or sculpturing of brush is desired. It allows plants to be severed below the bud zone for maximum kill.

SERIES ST: STINGER (Spot Grubber)

CATALOG NUMBER	APPLICABLE HP RANGE	WIDTH OF CUT FEET	METERS	ESTIMATED WEIGHT LBS.	WEIGHT KG.
Series ST-2.5	65-70 hp	2.5"	.76	700	320
Series ST-3	60-105 hp	3'0"	.91	760	345
Series ST-4	65-190 hp	4'0"	1.22	1,103	500
Series ST-5	140-190 hp	5'0"	1.52	1,264-1,325	573

Standard Equipment

- Attaching brackets (must be trimmed and welded on dozer)
- Cutting Edges (replaceable)

NOTE:
Specify tractor model, attachments and serial numbers when ordering.

HOLT.



**3302 South W.W. White Rd.
San Antonio, TX 78222
1-800-275-4658**